

GOLPH3 Antibody (N-Terminus)
Rabbit Polyclonal Antibody
Catalog # ALS13780**Specification**

GOLPH3 Antibody (N-Terminus) - Product Information

Application	WB, IHC-P, IF, E
Primary Accession	Q9H4A6
Reactivity	Human, Mouse, Rat
Host	Rabbit
Clonality	Polyclonal
Calculated MW	34kDa KDa
Dilution	WB~~1:1000 IHC-P~~N/A IF~~1:50~200 E~~N/A

GOLPH3 Antibody (N-Terminus) - Additional Information**Gene ID** 64083**Other Names**

Golgi phosphoprotein 3, Coat protein GPP34, Mitochondrial DNA absence factor, MIDAS, GOLPH3, GPP34

Target/Specificity

Human GOLPH3

Reconstitution & Storage

Short term 4°C, long term aliquot and store at -20°C, avoid freeze thaw cycles. Store undiluted.

Precautions

GOLPH3 Antibody (N-Terminus) is for research use only and not for use in diagnostic or therapeutic procedures.

GOLPH3 Antibody (N-Terminus) - Protein Information**Name** GOLPH3**Synonyms** GPP34**Function**

Phosphatidylinositol-4-phosphate-binding protein that links Golgi membranes to the cytoskeleton and may participate in the tensile force required for vesicle budding from the Golgi. Thereby, may play a role in Golgi membrane trafficking and could indirectly give its flattened shape to the Golgi apparatus. May also bind to the coatomer to regulate Golgi membrane trafficking. May play a role in anterograde transport from the Golgi to the plasma membrane and regulate secretion. Has also been involved in the control of the localization of Golgi enzymes through interaction with their

cytoplasmic part. May play an indirect role in cell migration. Has also been involved in the modulation of mTOR signaling. May also be involved in the regulation of mitochondrial lipids biosynthesis.

Cellular Location

Golgi apparatus, Golgi stack membrane; Peripheral membrane protein; Cytoplasmic side. Golgi apparatus, trans-Golgi network membrane; Peripheral membrane protein; Cytoplasmic side Mitochondrion intermembrane space. Cell membrane Endosome. Note=Phosphatidylinositol 4-phosphate-binding and oligomerization participate in the recruitment onto Golgi membranes.

Tissue Location

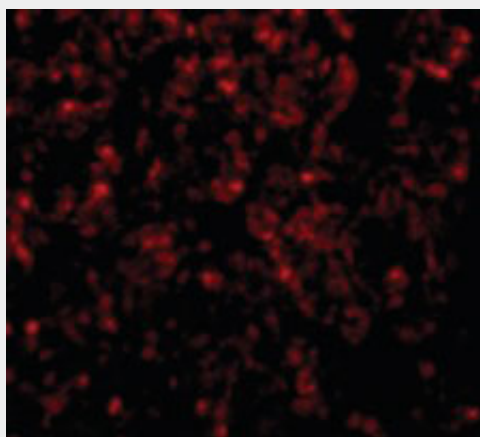
Detected in muscle fibers of patients with mitochondrial diseases; not detected in normal muscle fibers

GOLPH3 Antibody (N-Terminus) - Protocols

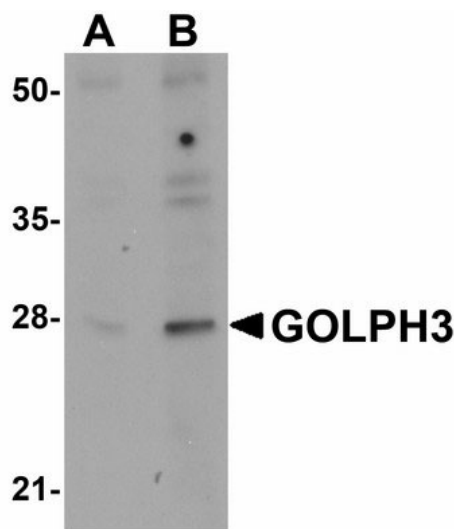
Provided below are standard protocols that you may find useful for product applications.

- [Western Blot](#)
- [Blocking Peptides](#)
- [Dot Blot](#)
- [Immunohistochemistry](#)
- [Immunofluorescence](#)
- [Immunoprecipitation](#)
- [Flow Cytometry](#)
- [Cell Culture](#)

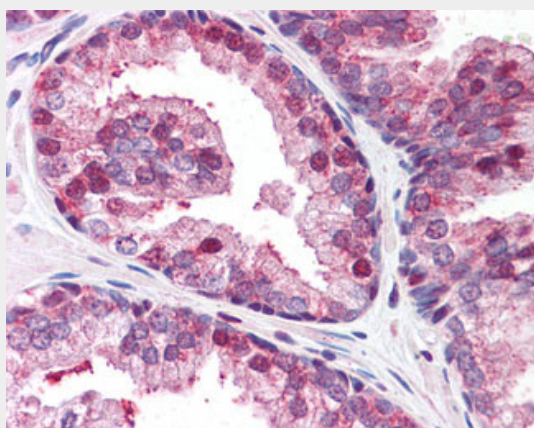
GOLPH3 Antibody (N-Terminus) - Images



Immunofluorescence of GOLPH3 in Rat Lung cells with GOLPH3 antibody at 20 ug/ml.



Western blot of GOLPH3 in rat lung tissue lysate with GOLPH3 antibody at (A) 0.5 and (B) 1 ug/ml.



Anti-GOLPH3 antibody IHC of human prostate.

GOLPH3 Antibody (N-Terminus) - Background

Phosphatidylinositol-4-phosphate-binding protein that links Golgi membranes to the cytoskeleton and may participate in the tensile force required for vesicle budding from the Golgi. Thereby, may play a role in Golgi membrane trafficking and could indirectly give its flattened shape to the Golgi apparatus. May also bind to the coatamer to regulate Golgi membrane trafficking. May play a role in anterograde transport from the Golgi to the plasma membrane and regulate secretion. Has also been involved in the control of the localization of Golgi enzymes through interaction with their cytoplasmic part. May play an indirect role in cell migration. Has also been involved in the modulation of mTOR signaling. May also be involved in the regulation of mitochondrial lipids biosynthesis.

GOLPH3 Antibody (N-Terminus) - References

- Bell A.W.,et al.J. Biol. Chem. 276:5152-5165(2001).
- Ota T.,et al.Nat. Genet. 36:40-45(2004).
- Gregory S.G.,et al.Nature 441:315-321(2006).
- Bechtel S.,et al.BMC Genomics 8:399-399(2007).
- Nakashima-Kamimura N.,et al.J. Cell Sci. 118:5357-5367(2005).